

Technical Bulletin
November 2009

Reticulated PU Foam

Technical Datasheet

Description: Reticulated PU Foam is perfectly opened-cell by the special process. INOAC is Asian leader of this technology.

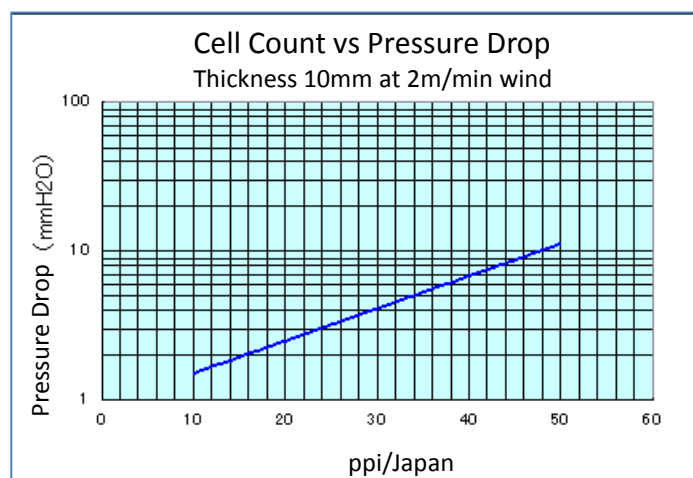
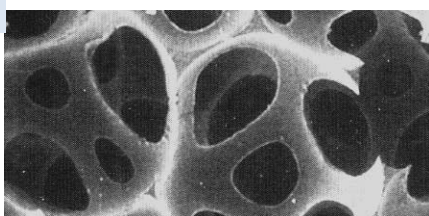
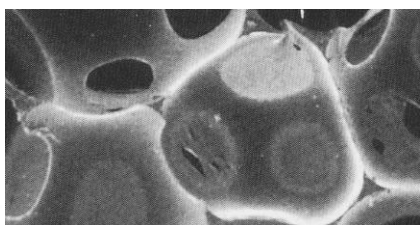
MF series: Ester Base Polyurethane Foam

Type	Density		Cell Count		Tensile		Elomgation	Standard Color	
	kg/m3	lb/ft3	ppi/Japan	ppi/US	kPa	psi	%		
MF-8	30±5	1.87	8±2	13	49≤	7.1	100≤	Black, Yellow	
MF-13	30±5	1.87	13+3,-2	22	98≤	14.2	150≤	Black, Yellow	
MF-20	30±5	1.87	20±4	33	98≤	14.2	150≤	Black, Yellow	ISO10993 Biocompatibility
MF-30	30±5	1.87	30±4	50	98≤	14.2	200≤	Black, Yellow	
MF-40	30±5	1.87	40±4	67	147≤	21.3	200≤	Black, Yellow	
MF-50	30±5	1.87	50±5	83	147≤	21.3	200≤	Black	
MF-55	57±5	3.56	55±10	92	147≤	21.3	200≤	Black, Grey	UL-94 HBF (2mmt≤)
MF-80A	75±10	4.68	70≤	117	196≤	28.4	200≤	Yellow, Cream	
MF-DS	83.1	5.19	104	173	220	31.9	485	Black	

CF series: Ether Base Polyurethane Foam

Type	Density		Cell Count		Tensile		Elomgation	Standard Color
	kg/m3	lb/ft3	ppi/Japan	ppi/US	kPa	psi	%	
CFH-13	30±3	1.87	13±3	22	78≤	11.3	50≤	Black
CFH-20	30±3	1.87	20±4	33	98≤	14.2	100≤	Black
CFH-30	30±3	1.87	30±4	50	147≤	21.3	100≤	Black
CFH-40	30±3	1.87	40±4	67	147≤	21.3	100≤	Black
CFH-50	30±3	1.87	45≤	83	177≤	25.7	100≤	Black
CF-40	26±2	1.62	35≤	58	78≤	11.3	150≤	Black, White
CFS	72±5	4.49	68±8	113	196≤	28.4	80≤	Grey, Yellow

Reticulation



Headquarters:

1280 East Big Beaver
Troy, Michigan 48083
Office: (248) 619-7031
Fax: (248) 619-7032

INOS Technologies

www.inostech.com

Email: info@inostech.com

Research

Laboratory:

401 W. Morgan Street
Ann Arbor, MI 48108
Office: (734) 274-0020
Fax: (734) 327-0626